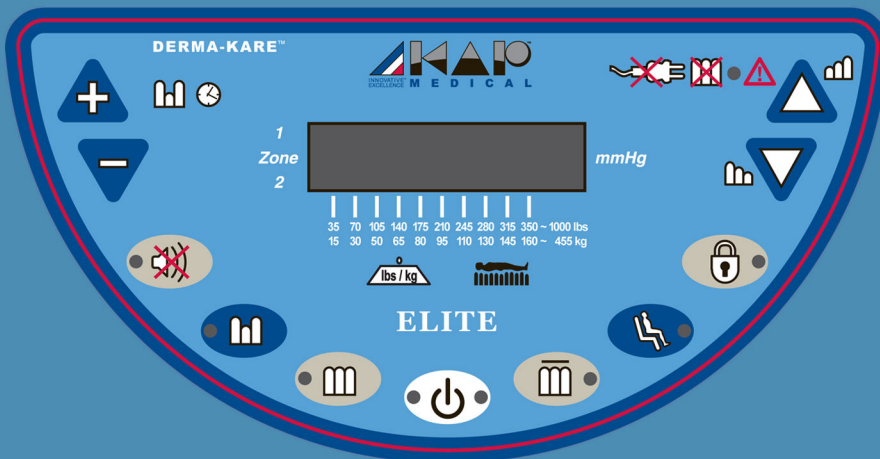


# DIGITAL ALTERNATING PRESSURE SYSTEM

ELITE Series



MADE IN THE USA



## K-1 DERMA-KARE™

# K-1 DERMA-KARE™

## Digital Alternating Pressure System

Smart Support Surface™ with Real Time Pressure Monitoring (RTPM) sensor technology

Effective means of providing **ALTERNATING (AP)** low interface pressure therapy with a digital display. Simple to operate and affordable. Mattress system with **Wireless Auto Upright (Fowler) Sensor**. **Smart Support Surface™ (SSS)** provides real time and accurate patient interface pressures below capillary occlusion with enhanced Alternating Pressure therapy and patient comfort.

### Control Unit (K-1) ELITE

- Plug and play auto-sensing multi-use control unit, operates in any country. Single high airflow pump, 42~52 LPM (liters per minute). State of the art micro-controller with Real Time Pressure Monitoring (RTPM) sensor technology. Software flexibility allows customer changes (custom pressures, times, and functions).
- User-friendly control panel with dome keys and bright digital LCD display for simple user interface. Displays current mode, A/P times, countdown timer, and patient comfort pressure level graph bar from Soft 6 to Firm 32 (actual mattress pressures in mmHg).
- Micro-controller shuts off the pump once the desired patient comfort pressure is obtained. The pump is off most of the time. Max Flow mode with 30 minute timer for rapid inflation of the mattress, inflates in 5 ~ 25 minutes depending on the size of the mattress.
- **Wireless Auto Upright (Fowler) Sensor (K-150)** automatically detects patient's fowler position & inflates the mattress to 80% higher than the set pressure to eliminate patient bottoming. In Auto Upright position the patient will still be provided with alternating pressure therapy.
- Provides effective static or alternating pressure therapies. Solenoids in the pump hold air for days in the event of power failure or during patient transportation.
- Lock out key completely locks the control panel to eliminate tampering of the patient settings, including power switch.
- Audiovisual alarms in the event of power outage or low pressures (hose disconnect). Alarm silence key to mute alarm. Internal memory always retains current settings during power outage, will resume desired operation upon power restoration.
- Control unit is reliable, quiet, compact and lightweight. For quick inflate please use our K-39 RID™ Rapid Inflator / Deflator unit.



### Smart Support Surface™ (K-1M) ELITE

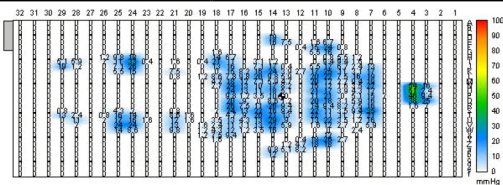
- Therapeutic support surface consists of superior quality, urethane coated nylon air cushions (16 cell overlay or 16/20 cell mattress) to provide effective A/P therapy with low interface pressures. Pad overlays or cell overlays are 3" or 5" or 7" high and mattress replacements are 8" or 10" high.
- **OPTIONAL SIDE BOLSTERS** constant air pressure side bolsters / foam bolsters help contain the patient on the mattress. Air bolsters can be deflated for easy patient access into and out of the mattress and also for easy patient procedures.
- Low friction, low shear force producing and highly vapor permeable urethane coated breathable nylon or 4-way stretch top sheet. 2" convoluted safety foam base or 2" optional air pad base (8" & 10" mattress) to provide additional support to the patient in the event of power failure.
- The air cells are connected to the manifold using quick connectors (hose manifold with straight connectors on Foam Aire products) and fastened to the base. The top sheet is zippered to the base. Bi-Lumen tubing assembly with single, rugged quick disconnect connector for rapid attach and CPR deflate function. Holds air for days during power failure.
- Complete support surface is made of superior quality materials and is modular in construction. All of the components such as manifold, tubing assembly, air cushions, top sheet, and foam base are interchangeable and can be easily cleaned or detached for laundry.
- Lightweight support surface can be rolled up easily and has two handles or two shoulder straps, which can be used to carry by hand or over the shoulder.

### SAC™ Support Air Cushion (K-140)

- SAC™ (optional) foot support air cushion can be used to support patient's feet and to provide zero interface pressures in the heel area.

## DERMA-KARE™ MODEL #: K-1COS / K-1MS8 / K-1MS / K-1RSB TECHNICAL DATA

| AUTO- SENSING.            | K-1 ELITE CONTROL UNIT   | SUPPORT SURFACE K-1CO / K-1M8 / K-1M / K-1RSM  |
|---------------------------|--|--|
| Input Voltage             | 90~264 V, 50/60 Hz, 1A/0.5A, Universal, <b>AUTO-SENSING</b>  | System Model # K-1MS for 80"x36"x10" Mattress replacement system   |
|                           |  | 3"/5"/7" (7.6/12.7/17.8cm) high mattress overlay.  |
| Power Cord                | 14' (427cm) long hospital grade detachable.  | 8"/10" (20.5/25cm) high mattresses. Side bolsters are available  |
| Fuse Protection           | 1 Amp Slow blow dual fuses.  | 36"/39"/42"/48"/54"/60" (91/99/107/122/137/152cm) wide mattresses.   |
| A/P Cycle Time            | Adjustable (1 ~ 99 minutes)  | 76"/80"/84" (193/203/213cm) long mattresses.   |
| Dimensions (LWH) / Weight | 12" x 11.5" x 5.5" (30cm x 29cm x 14cm) / 12 lbs. (5.5 Kg.).   | Standard Size: 80" x 36" x 5" (Overlay Mattress), 80"x36"x10" (Mattress Replacement) / 23 lbs. (10.5 Kg.). Custom sizes available.   |
| Weight Capacity           | Standard & Bariatric 360 ~ 1000 lbs (163~455 Kg).  | Standard & Bariatric 360 ~ 1000 lbs (163~455 Kg).  |
| Safety Agency Approvals   |  <p>ETL LISTED<br/>CONFORMS TO<br/>IEC STD 60601-1<br/>IEC STD 60601-1-2<br/>EN STD 60601-1<br/>ANSI/AAMI STD ES60601-1<br/>CERTIFIED TO<br/>CAN/CSA STD C22.2 NO. 60601-1</p> <p><b>OPTIONAL 3<sup>rd</sup> Edition Products are available.</b><br/>The standard for safety of Medical Electrical equipment.</p> | <p>With respect to Electrical Shock, Fire and Mechanical Hazards.</p> <p>CE Mark: 3<sup>rd</sup> Edition  <b>MADE IN USA</b></p> <p>An FDA Registered Company, Product Is FDA Listed. Medicare &amp; Medicaid coded, Health Canada Licensed. ISO 13485 certified company.</p> |
| Warranty                  | One year limited, parts and labor.   | One year limited, parts and labor.   |



Call us or visit our website for interface pressure map.

